

NOTES:

1. INTERPRET DIMENSIONS AND TOLERANCES PER ASME Y14.5.
2. DIMENSIONS MAY VARY +/- .25 INCH (.63 CM)

SPECIFICATIONS: OG-1500

OXYGEN OUTPUT.....1500 SCFH @ 45 PSI
 32.9 Nm/hr³ @ 310 kPa

OXYGEN DEWPOINT.....-100 °F (-73 °C)

OXYGEN PURITY.....93 % ± 3 %

AIR INLET.....1-1/2" FLANGE CONNECTION

OXYGEN OUTLET FITTING.....3/4" FNPT BULKHEAD (CONNECTION TYPE DISCUSSED AT PURCHASE)

FEED AIR REQUIREMENTS.....COMPRESSOR NOT INCLUDED ON STANDARD MODELS
 263 SCFM (AVG. FLOW) FOR COMPRESSOR-LESS MODELS
 AT 90 PSIG INCOMING PRESSURE
 5.91 Nm³ (AVG. FLOW) @ 621 kPa

AIR QUALITY REQ.....ISO 8573.1 CLASS 1.4.1 MINIMUM (SEE BELOW)

SOUND LEVELS:

STANDARD (WITHOUT COVER)93 dBA @ 1 M

DIMENSIONS:

STANDARD.....75 IN x 57 IN x 105 IN (WxDxH)
 190.5 CM x 144.8 CM x 266.7 CM (WxDxH)

APPROXIMATE WEIGHT:

STANDARD (NO COVER, NO FEET).....7000 LB (3175 KG)

POWER REQUIREMENTS:

STANDARD (NORTH AMERICA).....115 VAC, 60 HZ, SINGLE PHASE, 1.0 A
 OPTIONAL (INTERNATIONAL).....230 VAC, 50 HZ, SINGLE PHASE, 0.5 A
 OPTIONAL (INTERNATIONAL).....230 VAC, 60 HZ, SINGLE PHASE, 0.5 A

RESPONSE TIME.....APPROXIMATELY 3 CYCLES TO ATTAIN
 MAXIMUM CONCENTRATION/PURITY AFTER
 INITIAL START-UP OR EXTENDED SHUTDOWN

POSITIONING.....THE UNIT MUST BE OPERATED IN AN UPRIGHT
 POSITION ONLY, WITH NO OBSTRUCTION
 BLOCKING AIR FLOW AROUND THE UNIT,
 6 IN MINIMUM

RECOMENDED MINIMUM AIR STORAGE TANK (AST) SIZE.....660 GALLONS

RECOMENDED MINIMUM OXYGEN STORAGE TANK (OST) SIZE.....660 GALLONS

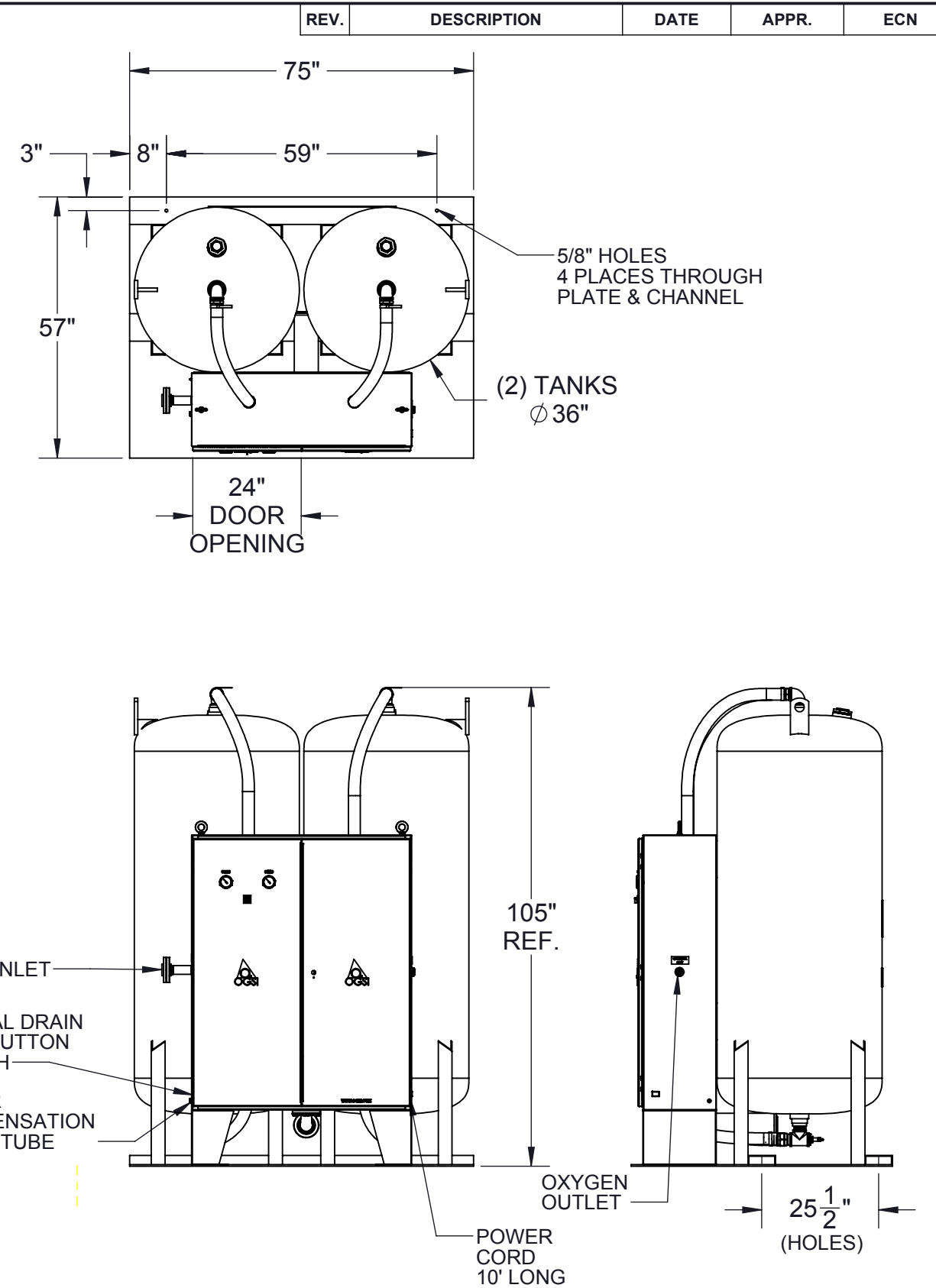
SPECIFICATIONS: ISO 8573.1 CLASS 1.4.1

DIRT PARTICLES 1-5 MICRON.....0

WATER PRESSURE DEWPOINT+37 °F (3 °C) (940 PPM AT 100 PSIG)

OIL CONCENTRATION
 (INCLUDING VAPOR).....0.01 (<= 3 PPM)

* A STANDARD CUBIC FOOT (SCF) IS A CUBIC FOOT OF GAS AT
 14.7 PSIA (SEA LEVEL ATMOSPHERIC PRESSURE) AND 60 °F



PROPRIETARY AND CONFIDENTIAL		DRAWN: T. WHETSTONE 03/13/17		PART NO: 10016		DRAWING TITLE: GENERAL ARRANGEMENT OG-1500	
All drawings, descriptions, prints, specifications, etc. bearing this notice, together with the information, and ideas contained therein, are the sole and exclusive property of Audubon Machinery Corp. Any disclosure or use thereof not authorized in writing by Audubon Machinery Corp. is unlawful and will be prosecuted to the full extent of the law.		CHKD: A. MOEHLAU 03/13/17		STOCK NO.		QTY.	
UNLESS OTHERWISE SPECIFIED		DECIMALS: .XXX +/- .005		FRACTIONS: +/- 1/16		DESCRIPTION	
		.XX +/- .02		ANGLES: +/- 1°		MATERIAL	
						ASSY	
				REMOVE ALL BURRS AND BREAK SHARP EDGES 1/16" MAX		DO NOT SCALE DRAWING	
AUDUBON MACHINERY CORP.		814 Wurlitzer Dr., N. Tonawanda, NY 14120				SHEET: 1 OF 1	